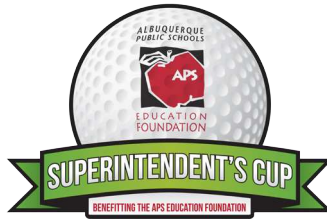




PRESENTED BY





WELCOME FROM THE SUPERINTENDENT

OK, so here's the truth: I love golf.

I just don't play golf.

If you're a regular at the Superintendent's Cup, presented by B&D Industries, you know the leadership at Albuquerque Public Schools shows up en masse to have fun with you. But my fun and your fun are two different things, because if I'm playing this becomes a three-day tournament. Not good! So, instead, my colleagues and I will be on the course to grade your swings, offer some encouragement, and above all, thank you for your participation. Your help to the Foundation and the district is critical, because when our community is involved, APS gets better. The Superintendent's Cup provides tens of thousands in support for district schools and classrooms, and in these days of tight budgets, that consideration is all the more important. Please accept my sincere gratitude for your time, and please know that in this case, at least, we will be generous graders as we watch you play. This is one day when everyone deserves an A!

– *Raquel Reedy*

WELCOME FROM THE EXECUTIVE DIRECTOR

Hello, and thanks for playing today in the APS Education Foundation Superintendent's Cup, presented by B&D Industries. So many of our sponsors are essential to the success of this event, but we need to thank Troy Beall of B&D for his continued presence. B&D was in on the ground floor of this event when it was just getting started, and now we're one of the biggest benefit tournaments in Albuquerque. While we're on the subject, let me thank our sponsors, our volunteers and every player out here. When you support the Foundation, you're making a difference in public education – kid by kid, school by school. We are so grateful. Thanks again!

– *Phill Casaus*



WELCOME FROM THE PRESIDENT OF THE BOARD

Greetings, Golfers!

Welcome to the 6th annual Superintendent's Cup, supporting the APS Education Foundation. I am grateful to see this event grow to one of the biggest golf tournaments in Albuquerque.

This foundation strives to fund creative ideas from APS educators that bring unique teaching concepts to the classroom. Our teachers are faced with challenges every day, but that doesn't deter them from thinking outside the box and finding new, innovative ways to get students excited about learning.

This year, the Foundation will put over a half million dollars into the classroom to fund grants ranging from \$1,000 to \$50,000. Some of these grants include STEAM labs where students have hands on scientific learning experience with software and hardware; mentorship classes that bring volunteers into elementary schools with the objective of strengthening reading skills, and the STEM Trajectory Initiative, exposing multiple elementary and middle school students to rockets and robotics.

These and so many other grants were made possible through generous contributions from friends like you and your organizations, who believe in our public schools and recognize how the Foundation can help incubate great ideas.

Thank you for your participation in today's golf tournament. I hope you hit them straight and have a wonderful time.

– *Adrian Chavez, PepsiCo*



SCHEDULE OF EVENTS

6:30AM

First flight check-in opens and breakfast burritos and coffee are served on the patio

7:30AM

First flight shotgun start

11:30AM

Second flight check-in opens

12:00PM

The Superintendent's Cup Luncheon for both flights is served in the Event Center where first flight prizes will be awarded

1:30PM

Second flight shotgun start

6:00PM

Dinner is served in the Event Center for the returning second flight where second flight prizes will be awarded and the tournament winner will be announced

6:30PM

Silent auction closes



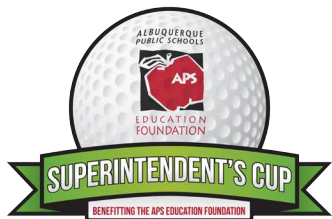
RULES OF PLAY

- Each member of the team hits their own drive.
- The team picks the best drive from the team, and all other members of the team place their ball next to that drive.
- Each member of the team hits a ball from that spot and then the team chooses the shot they like the best.
- They follow this routine for the entire hole, including when putting.
- Par is your friend. To keep the speed of play at a good pace, please pickup your ball and move to the next hole upon reaching par.

GOLF ETIQUETTE

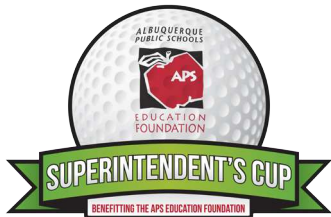
1. Please smooth all marks made in sand bunkers.
2. Leave the putting green as soon as you have holed out.
3. Do not play until the players in front of you are out of range.
4. Please observe all local course rules.
5. Enjoy the day and your fellowship with other golfers.
6. Thank you for making a difference in Albuquerque Public Schools.





COURSE MAP





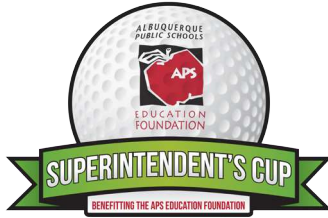
LUNCH MENU

Chicken Breast with House Salad, Green Beans and
Dinner Rolls with Honey Cinnamon Butter

DINNER MENU

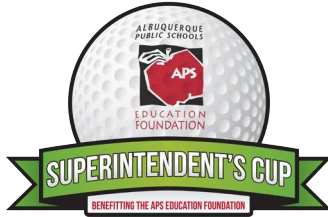
Pulled Pork with House Salad, Baked Beans and
Dinner Rolls with Honey Cinnamon Butter





THANK YOU EXCLUSIVE SPONSORS





THANK YOU EAGLE SPONSORS



MODRALL SPERLING

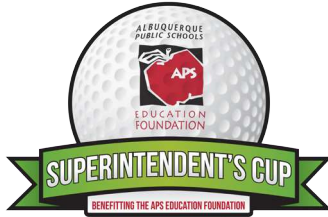
L A W Y E R S



RBC Capital Markets®



ANCHOR BUILT INC.
Construction from the Ground Up

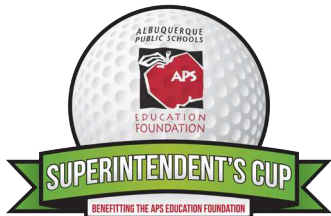


THANK YOU BIRDIE SPONSORS



PAUL DAVIS
RECOVER • RECONSTRUCT • RESTORE

RayLee Homes
A NEW GENERATION



THANK YOU CLASSIC TEAM SPONSORS

ALTOR CONSTRUCTION

BLUE CROSS AND BLUE SHIELD OF NEW MEXICO

BORDER STATES ELECTRIC

BRIDGESTONE

CASA AUTO GROUP

DEALERS ELECTRICAL SUPPLY

GRAND CANYON UNIVERSITY

KONE, INC.

MERRILL LYNCH

PRESBYTERIAN HEALTH PLAN

REDBURN TIRE COMPANY

STEAMATIC OF ALBUQUERQUE AND SANTA FE

SOUND AND SIGNAL SYSTEMS OF NEW MEXICO

TRANE

TRIWEST FENCE, LLC

U.S. ELECTRICAL CORPORATION

WESTWIND LANDSCAPE



APS EDUCATION FOUNDATION

Through inspired philanthropy and community support, the APS Education Foundation seeks to make a real difference in the lives of students and teachers of Albuquerque Public Schools.

The APS Education Foundation is a 501 (c)(3) non-profit organization established for promoting private support of the district and its students. In partnership with Albuquerque Public Schools, we promote and garner financial and in-kind resources to provide students with the opportunity to succeed. We also mobilize resources and develop community partnerships to support excellence in APS.

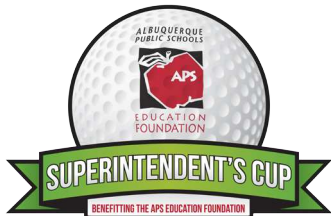
The Foundation disburses grants to schools and classrooms in focus areas such as literacy, fine arts, STEM and clubs and activities.

Visit www.apseducationfoundation.org to learn more.

ALBUQUERQUE
PUBLIC SCHOOLS



EDUCATION
FOUNDATION



THANK YOU

2017 SUPERINTENDENT'S CUP GOLF COMMITTEE

John Dufay, Chair
Executive Director, APS Maintenance & Operations

Vanessa Olguin, Silent Auction Chair
Specialist, APS Fleet Maintenance

Brandy Smotts, Logistics Chair
Director of Sales, The Canyon Club

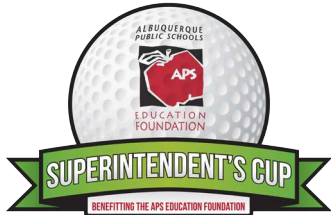
Rick Brown
Development Chair, APS Education Foundation Board of Directors
President, Westwind Landscape

Paul Cassidy
Managing Director, RBC Capital Markets

Adrian Chavez
President, APS Education Foundation Board of Directors
Key Account Manager, PepsiCo

Kristi Greiner
Director of Marketing, Paul Davis Restoration

Katie Sandoval
Marketing Coordinator, B&D Industries, Inc.



THANK YOU FROM THE GOLF COMMITTEE CHAIR

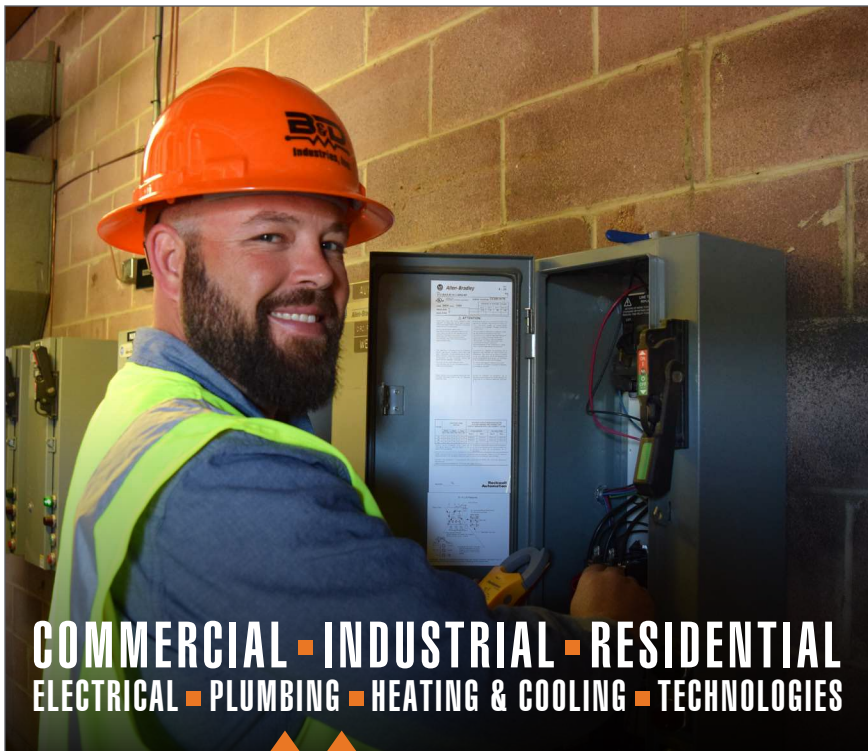


On behalf of our dedicated volunteers, our Superintendent's Cup Golf Committee and everyone at Albuquerque Public Schools, I want to say thank you. Your participation in the tournament has a direct impact on education. Your dollars will go to grants that are disbursed by the APS Education Foundation creating new opportunities for our students to succeed. Because of you, innovative and critical programs have the potential to grow and reach more of our students. Your generous investment makes a difference.

For the past six years, the Superintendent's Cup has provided a time and place for all of us to shake hands, get to know each other, enjoy a great game of golf and share our stories. I encourage you to continue the conversation with the Foundation to hear the stories about what has been made possible through your participation.

Thank you,

– *John Dufay*



COMMERCIAL ■ INDUSTRIAL ■ RESIDENTIAL
ELECTRICAL ■ PLUMBING ■ HEATING & COOLING ■ TECHNOLOGIES



*Proud to be the
presenting sponsor*



(505) 299-4464

www.bandindustries.com



ROBERT COHEN
COMPANY, LLC

Athletic Surfaces
TRACK—TURF—TENNIS—INDOOR

"Grip It and Rip It"

Toll Free: 877.395.1978
www.sport-surfaces.com



Supporting Albuquerque Public Schools

RBC Capital Markets is proud to help support Albuquerque's kids through its sponsorship of the Superintendent's Cup benefitting the APS Education Foundation. We are always dedicated to serving the needs of our New Mexico clients.



RBC Capital Markets

Paul J. Cassidy, Managing Director
paul.cassidy@rbccm.com

Erik B. Harrigan, Director
erik.harrigan@rbccm.com

6301 Uptown Blvd. NE, Suite 110 Albuquerque, NM 87110
505.872.5999

rbccm.com/municipalfinance

This advertisement is for informational purposes only. ©/™ Trademark(s) of Royal Bank of Canada. © Copyright 2017. Used under license. Member SIPC. All rights reserved.

HOW TO MOBILE BID

WHEN REGISTERING YOUR MOBILE PHONE NUMBER

- You will receive a text message, click the link
 - You may have to accept a user agreement from AT&T
 - to access the Internet
- A web browser will open taking you directly to the bidding page
- Verify your name
- Search for packages by number or keyword using the magnifying glass, or category under the menu
- You can Quick Bid to the next increment, set a Max Bid or Watch packages
 - If your max bid is the highest, the system will automatically bid in your favor until you are outbid or until the silent auction closes
 - To select packages with no bids, select No Bid Packages under the menu
- If you are outbid, you will receive a text message
- To get back to the main screen, click the House icon
- To view the packages you are bidding on, click the menu button and select My List

OTHER OPTIONS TO GET STARTED:

- Open your web browser and type <http://apsecup.ggo.mobi>
- Enter your bid number or mobile number to log in and follow the steps above

ALBUQUERQUE
PUBLIC SCHOOLS



EDUCATION
FOUNDATION

The APS Education Foundation is a 501 (c)(3) nonprofit organization established for promoting private support of the district and its students. In partnership with APS, we garner financial and in-kind resources that help provide students with the opportunity to succeed. We also mobilize resources and develop community partnerships to support excellence in the state's largest school district.